

GCLoader PNP Installation for DOL-101 & DOL-001 GameCube (All Regions)

Tools Needed:

- Gamebit 4.5mm security screwdriver (NTSC-U, PAL Units Only)
- Philips Screwdriver size no. 1

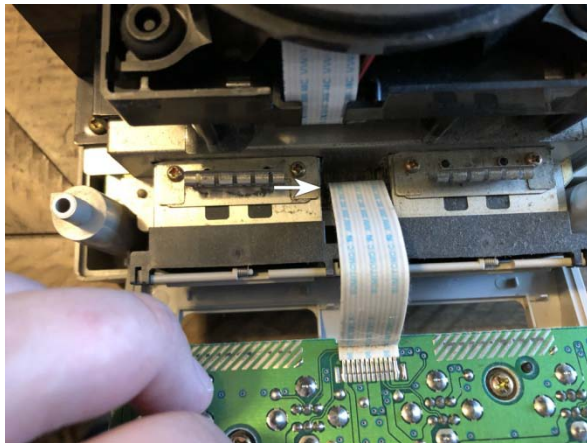
Step 1

Remove the 4 security screws shown with arrows using a game bit driver. *Some consoles use normal Phillips screws.



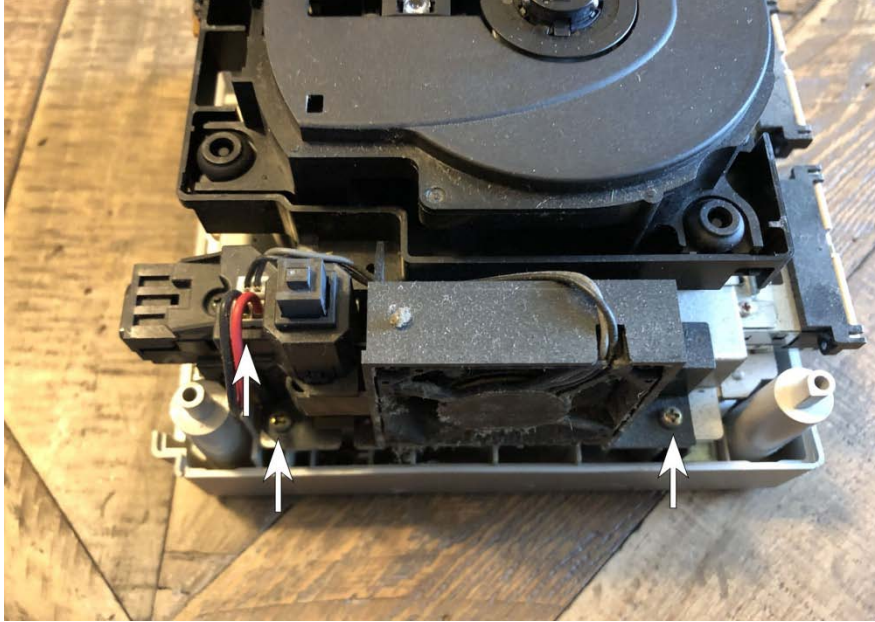
Step 2

Remove the back plate and front plate. Gently pull the flex cable at the arrow location.



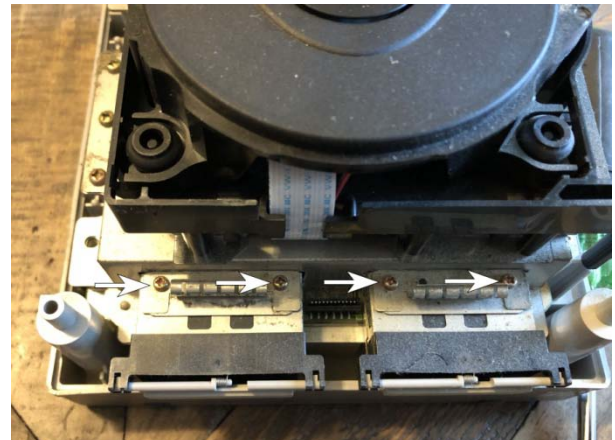
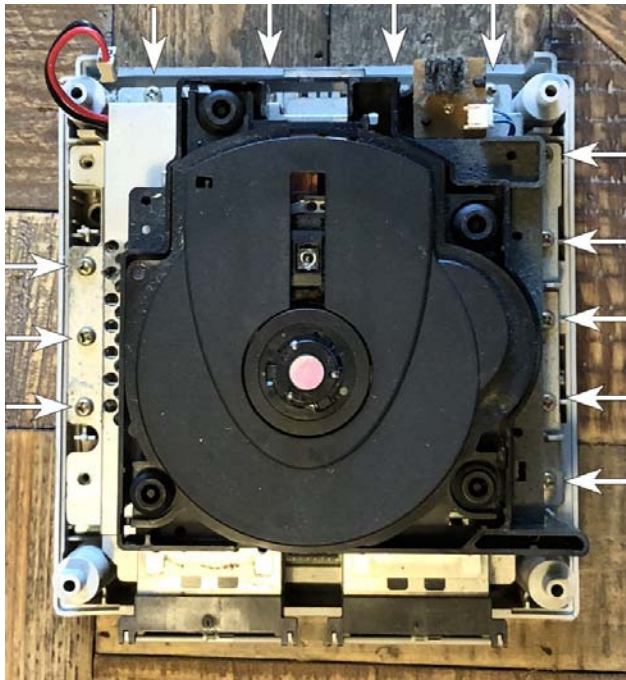
Step 3

Remove the two screws, unplug power cable and remove fan unit.



Step 4

Remove all screws shown with arrows.



Step 5

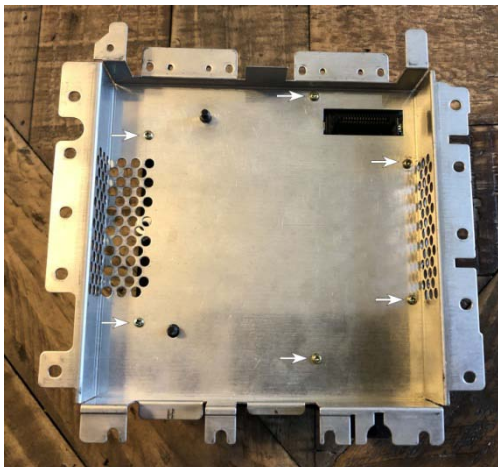
Remove Top DVD drive assembly.



Step 6

Remove DVD drive from metal shield by removing all screws as shown.

DOL-001



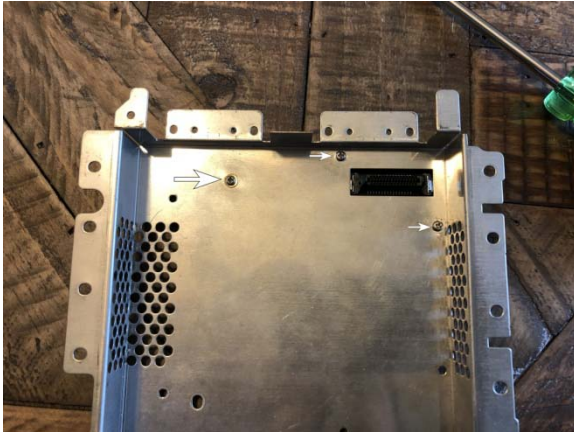
DOL-101



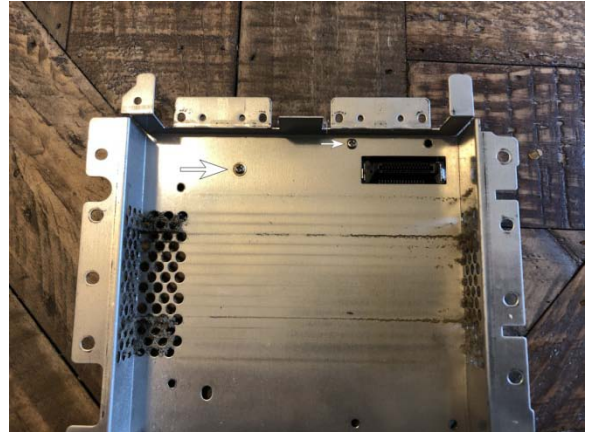
Step 7

Install the GLoader with the supplied screws and washer. DO NOT overtighten. Put the washer where the large arrow is pointing. DOL-101 consoles will only use two screws.

DOL-001



DOL-101



Step 8

Install the top metal shell back onto the gamecube. Now you can start re-assembly of your GameCube. Congratulations, you are done!

